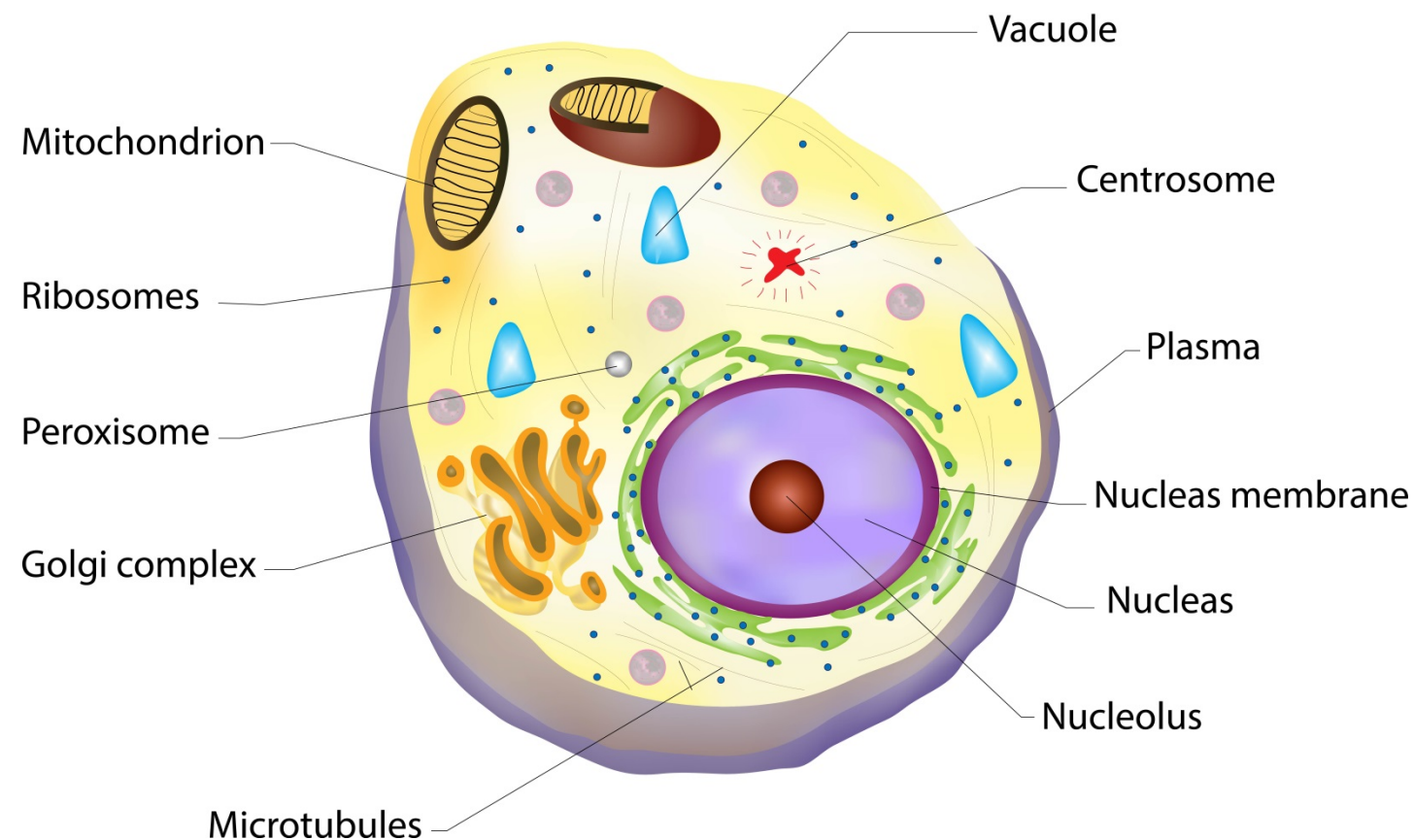


How the Discovery Process Works

(Part 1: Cell vs. Cell Phone)

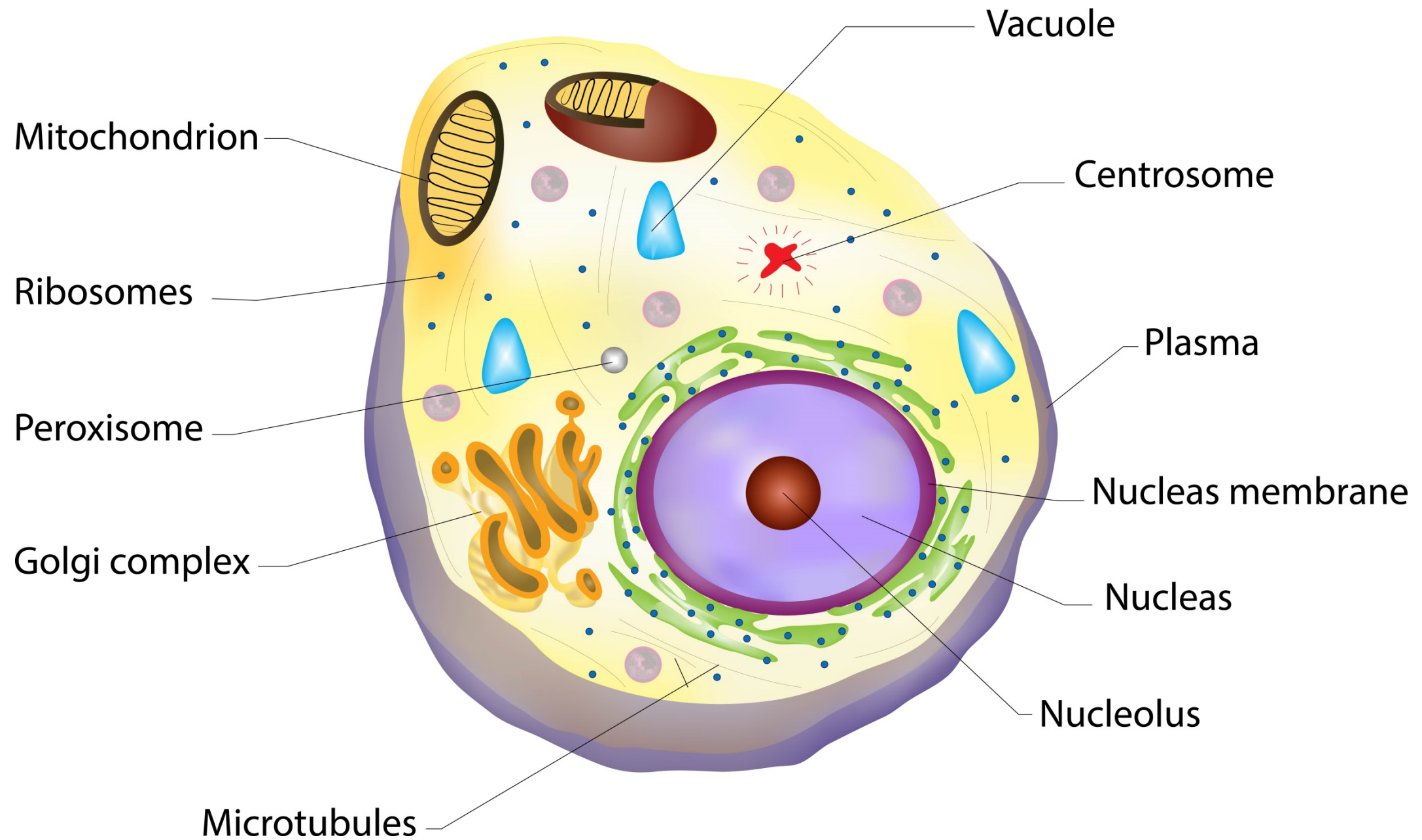


What Is Scientific Research?

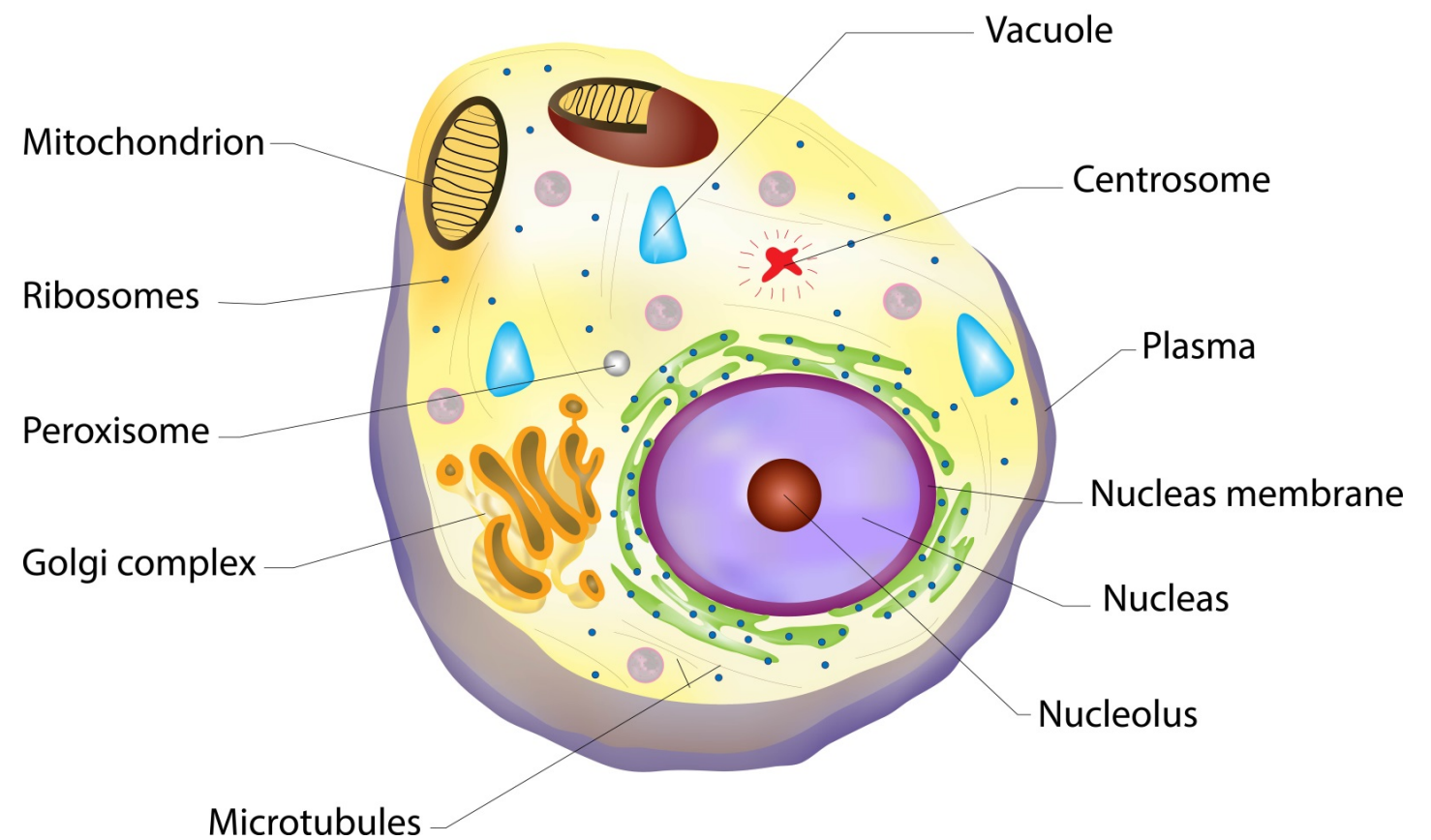
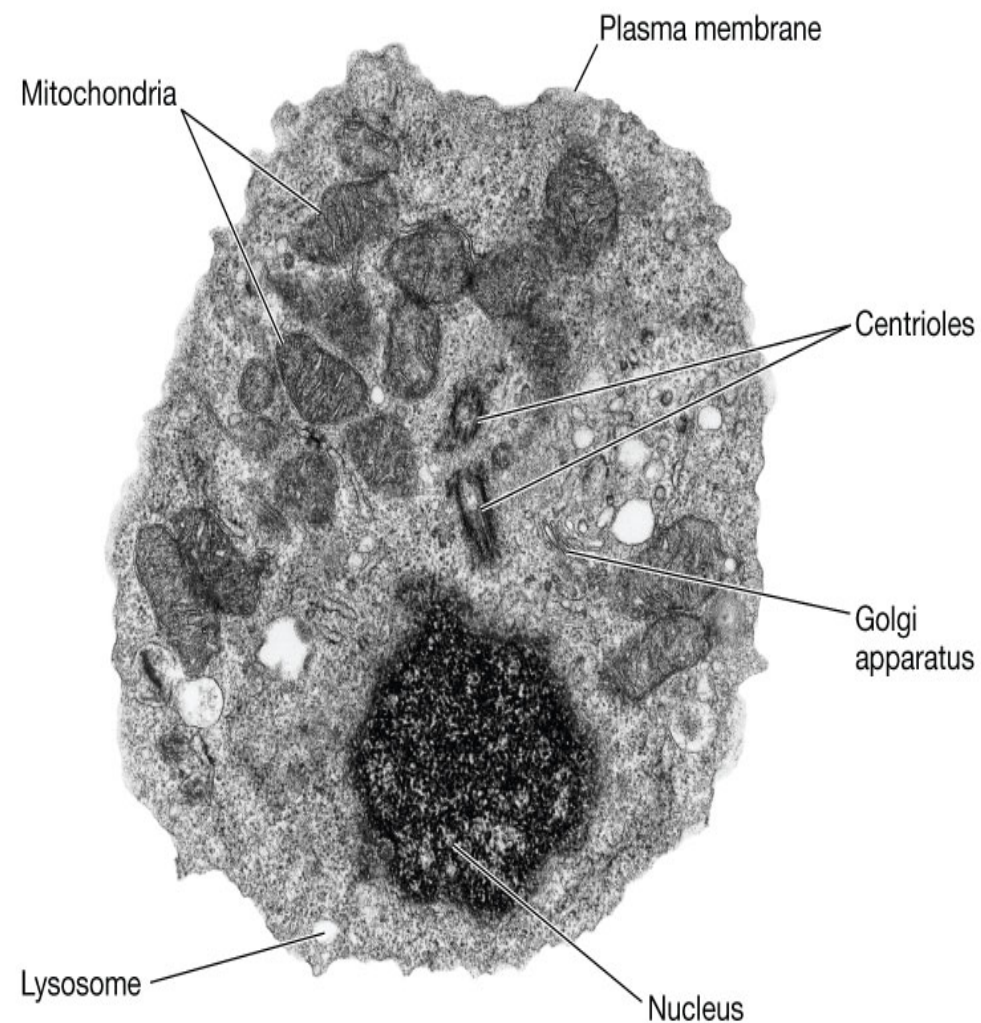


How does research on a cell differ from that of a cell phone?

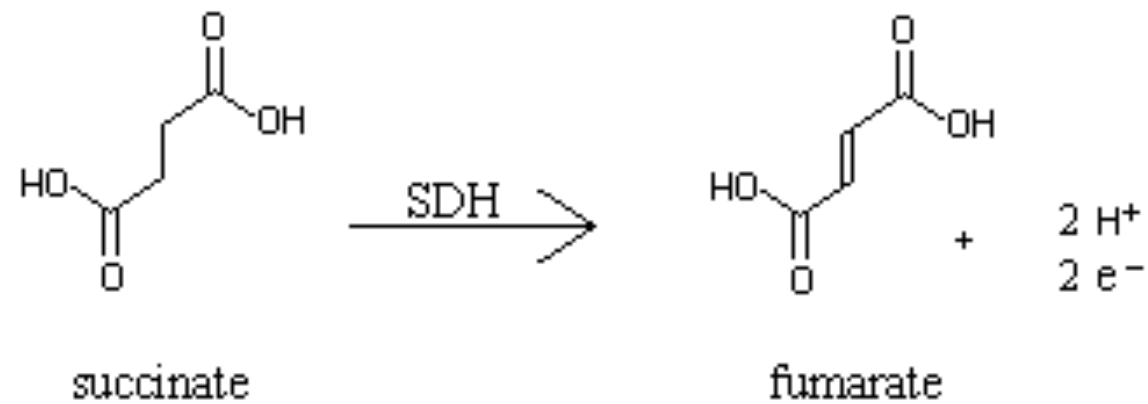
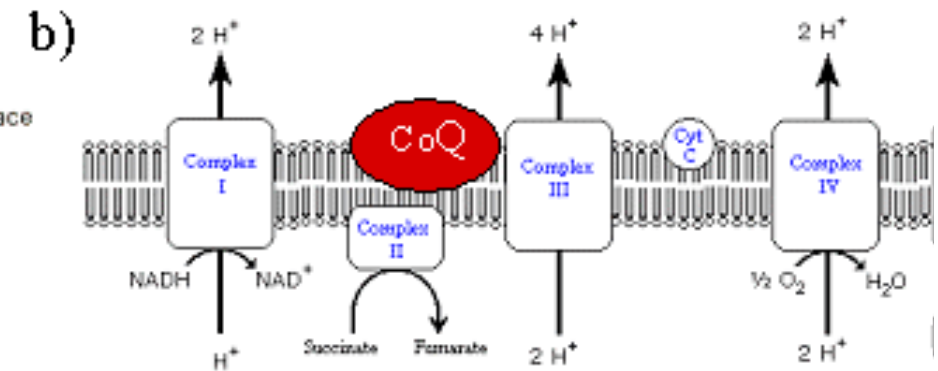
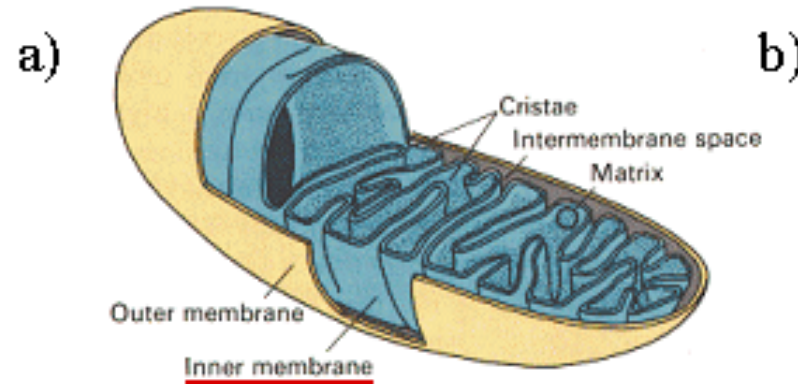
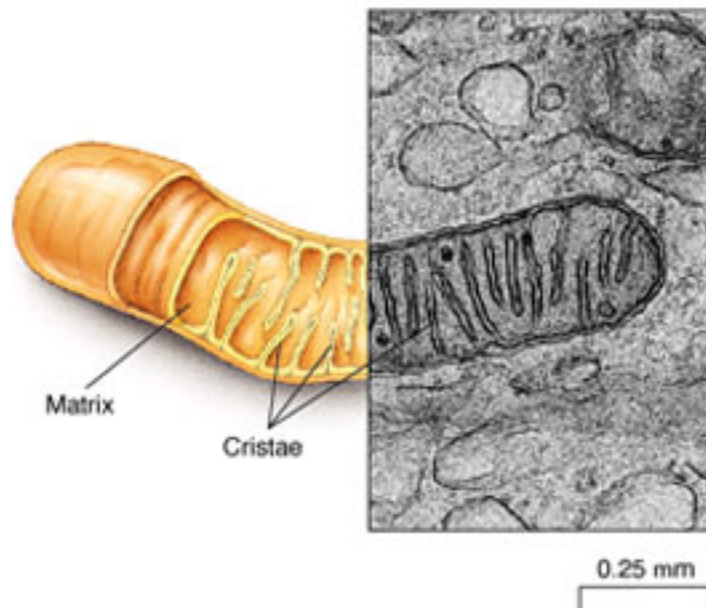
Scientific Research on a Cell



Electron Micrograph of Cell

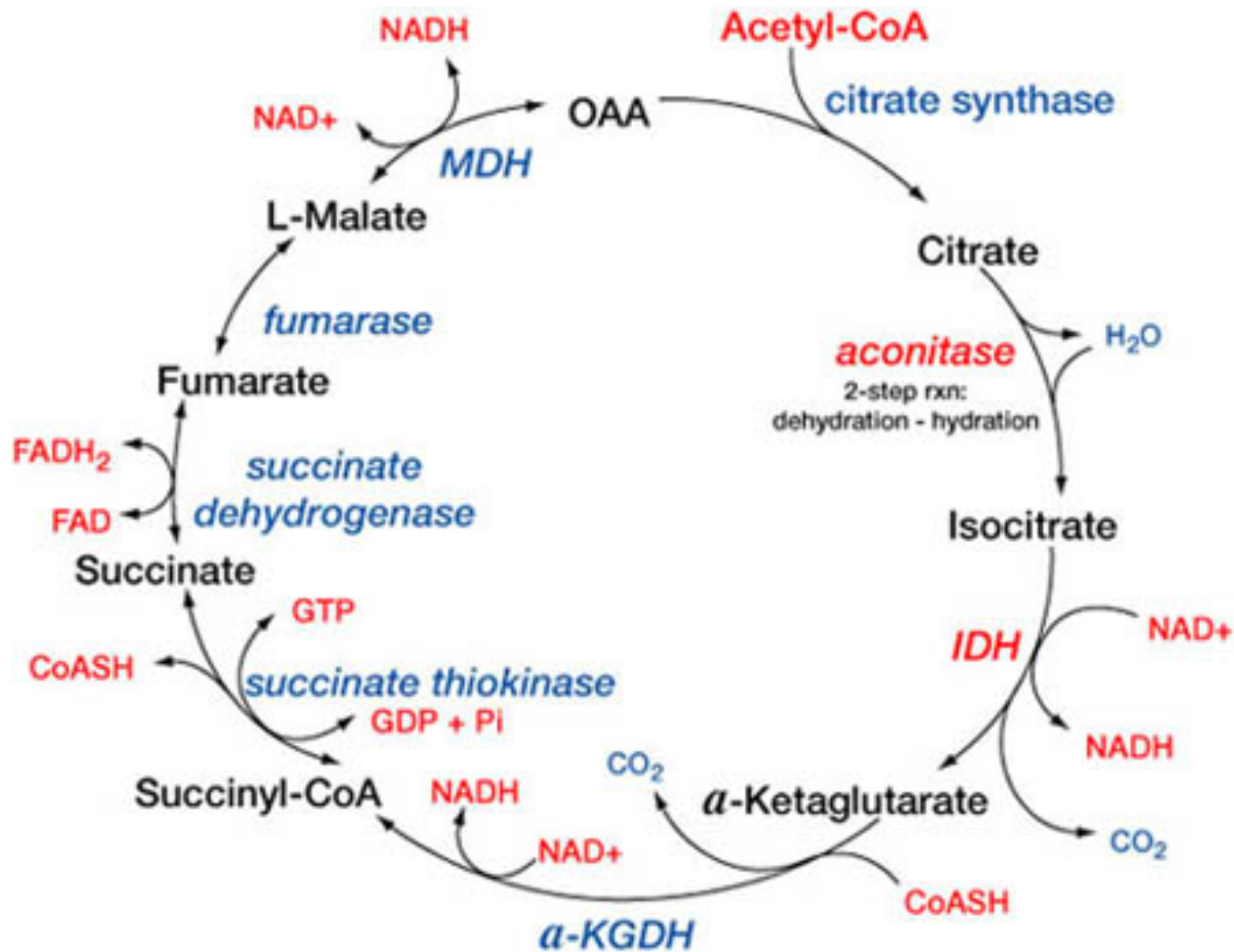


Mitochondria



succinate dehydrogenase reaction

Krebs Cycle



Biochemical Pathways

Krebs Cycle

